

1956

PARTS LIST

EVINRUDE FLEETWIN 7.5

MODELS 7520 AND 7521

INSTRUCTIONS ON HOW TO ORDER

For their convenience, as well as ours, we ask our customers to carefully follow our instructions in ordering parts.

We also request that owners order their parts from our dealer or nearest service station or distributor.

ORDER BY PART NUMBER GIVING NAME OF PART ALSO.

ALWAYS GIVE THE SERIAL NUMBER OF THE MOTOR FOR WHICH PART OR PARTS ARE REQUIRED.

This is very important, and is necessary to intelligently fill your order. If you cannot give the number of the motor, state when and from whom the motor was purchased.

TELEGRAMS AND HOW TO USE "EVINRUDE CODE."

Telegram rates are based on fifteen words or less, for immediate delivery. Day letter or night letter rates are considerably cheaper. Detailed information may be found on rear of any telegram blank.

Use the following code only on messages of more than fifteen words. Each five code letters are charged

for as a word. English words and code words may be used in the same message, but code letters cannot be combined with English words.

- | | | |
|-------|------------|-----------------------|
| A - 1 | G - 7 | L - Air Parcel Post |
| B - 2 | H - 8 | M - Freight - Truck |
| C - 3 | I - 9 | V - Air Express |
| D - 4 | J - 0 | X - Express |
| E - 5 | K - Each | Y - Parcel Post |
| F - 6 | P - Number | Z - Freight - Railway |

Following is an example of a telegram not coded and the same reduced to code:

(NOT CODED - 22 WORDS.)

Parcel Post Two Number One Three Naught Naught Four Four Propeller Nut Twelve Number One Three Naught Naught Five Three Shear Pins.

(CODED - 8 WORDS.)

YBPAC JJDD Propeller Nut ABPAC JJEC Shear Pins.

Do not use this code in cable messages.

ROUTING • TERMS • RETURNS

SHIPPING INSTRUCTIONS.

Unless specific instructions accompany the order, we will use our own judgement on how to ship.

TERMS: CASH WITH ORDER OR C.O.D.

In ordering parts, to avoid C.O.D. shipments and extra charges, all orders should be accompanied by cash. Save time and money by remitting sufficient cash to cover cost of parts and Transportation Charges. Stamps are accepted in payment of all orders not over \$1.00. The right to hold all

orders unaccompanied by cash is reserved by Evinrude Motors, Milwaukee.

A minimum charge of \$0.50 net will be made on all orders amounting to less than this amount. We reserve the right to furnish additional parts to make up the difference.

INSTRUCTIONS ON RETURNING PARTS.

Parts can only be returned in accordance with terms outlined under the Service Policy laid down in the instruction manual.

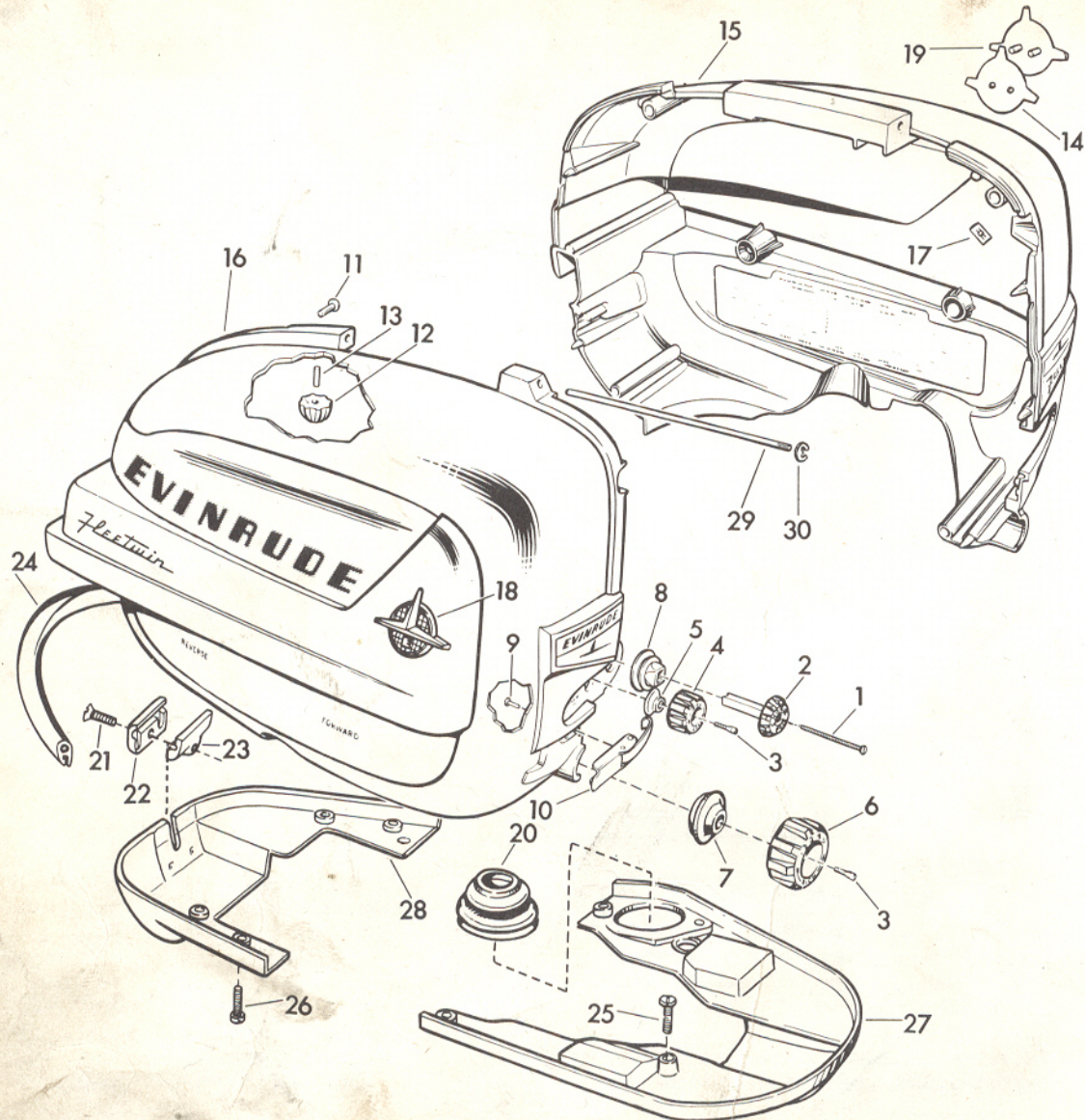
ALL PRICES SUBJECT TO CHANGE WITHOUT NOTICE

EVINRUDE MOTORS, Milwaukee, Wis., U.S.A.

SECOND EDITION

CABLE ADDRESS "EVINRUDE"

FLEETWIN MOTORCOVER

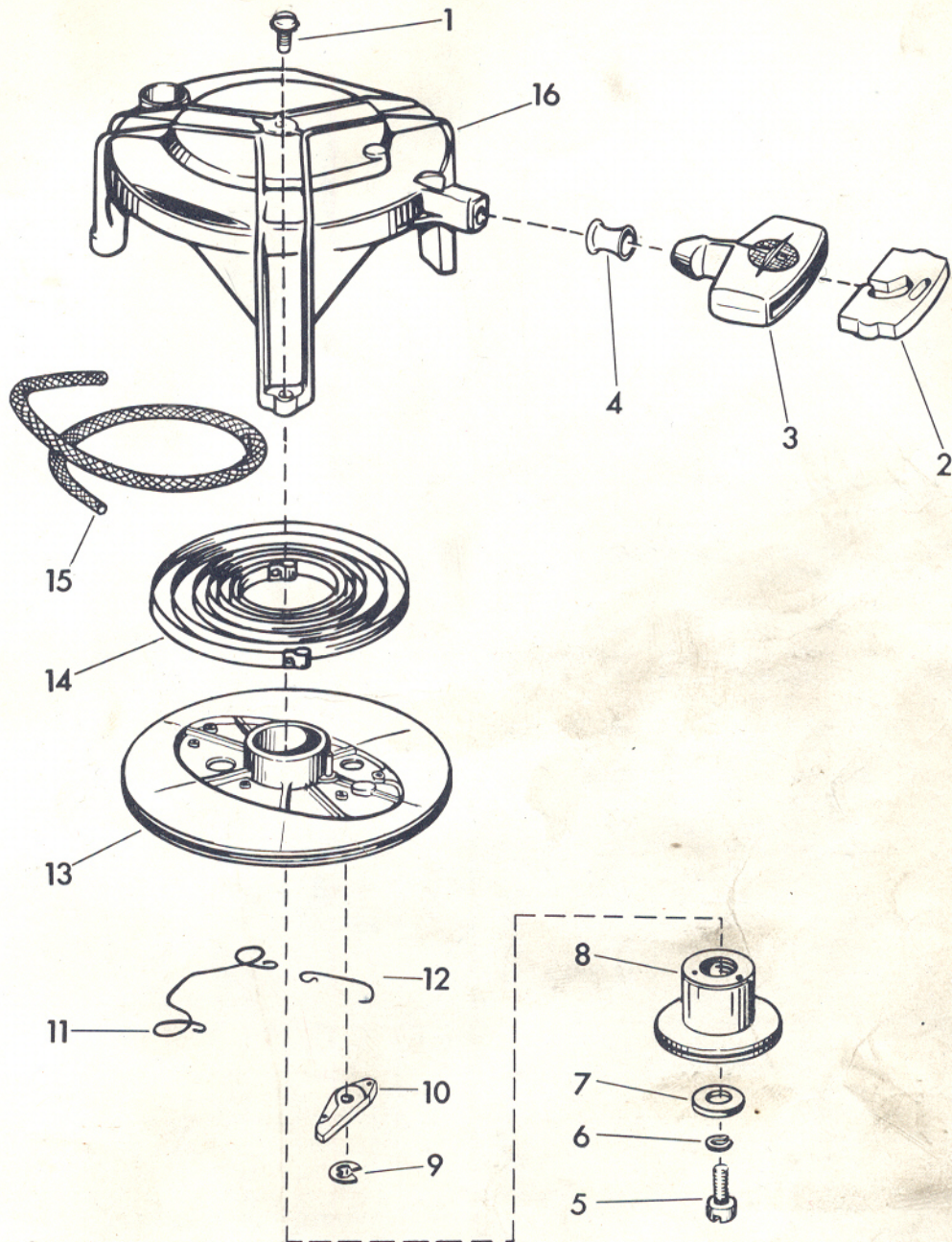


REF. NO.	PART NO.	NAME OF PART	QTY.	REF. NO.	PART NO.	NAME OF PART	QTY.
1	203676	Choke knob screw	1	17	203786	Medallion to motor cover nut . . .	4
2	203602	Choke control knob	1	18	203785	Motor cover medallion - Star-board	1
3	551517	High and low speed knob screws .	2	19	203784	Motor cover medallion - Port . . .	1
4	203601	Control knob and stop pin, slow speed	1	20	304296	Control shaft grommet	1
5	203617	Low speed knob cover grommet . .	1	21	304022	Seal to lower cover clamp screw .	1
6	203600	Control knob and stop pin, high speed	1	22	304021	Outer seal to lower cover clamp .	1
7	203616	High speed knob cover grommet . .	1	23	304020	Inner seal to lower cover clamp .	1
8	203361	Choke knob grommet	1	24	304297	Lower motor cover seal	1
9	71X1001	Latch to cover rivet	4	25	304015	Lower cover to exhaust housing screw, front	1
10	277284	Cover latch assembly	2	26	304012	Lower cover to exhaust housing screw	6
11	203290	Motor cover bumper.	4	27	304239	Lower motor cover, front	1
12	203455	Cover to starter housing bumper .	1	28	304240	Lower motor cover, rear	1
13	203897	Cover to starter housing pin . . .	1	29	277615	Motor cover hinge pin assembly .	1
14	203971	Motor cover medallion gasket . .	2	30	203949	Motor cover hinge pin retaining ring	1
15	277513	Motor cover assembly - Port . . .	1	*		Set of decals	1
16	277514	Motor cover assembly - Star-board	1				

*Not Shown

ORDER YOUR PARTS FROM YOUR DISTRICT SERVICE STATION

FLEETWIN STARTER

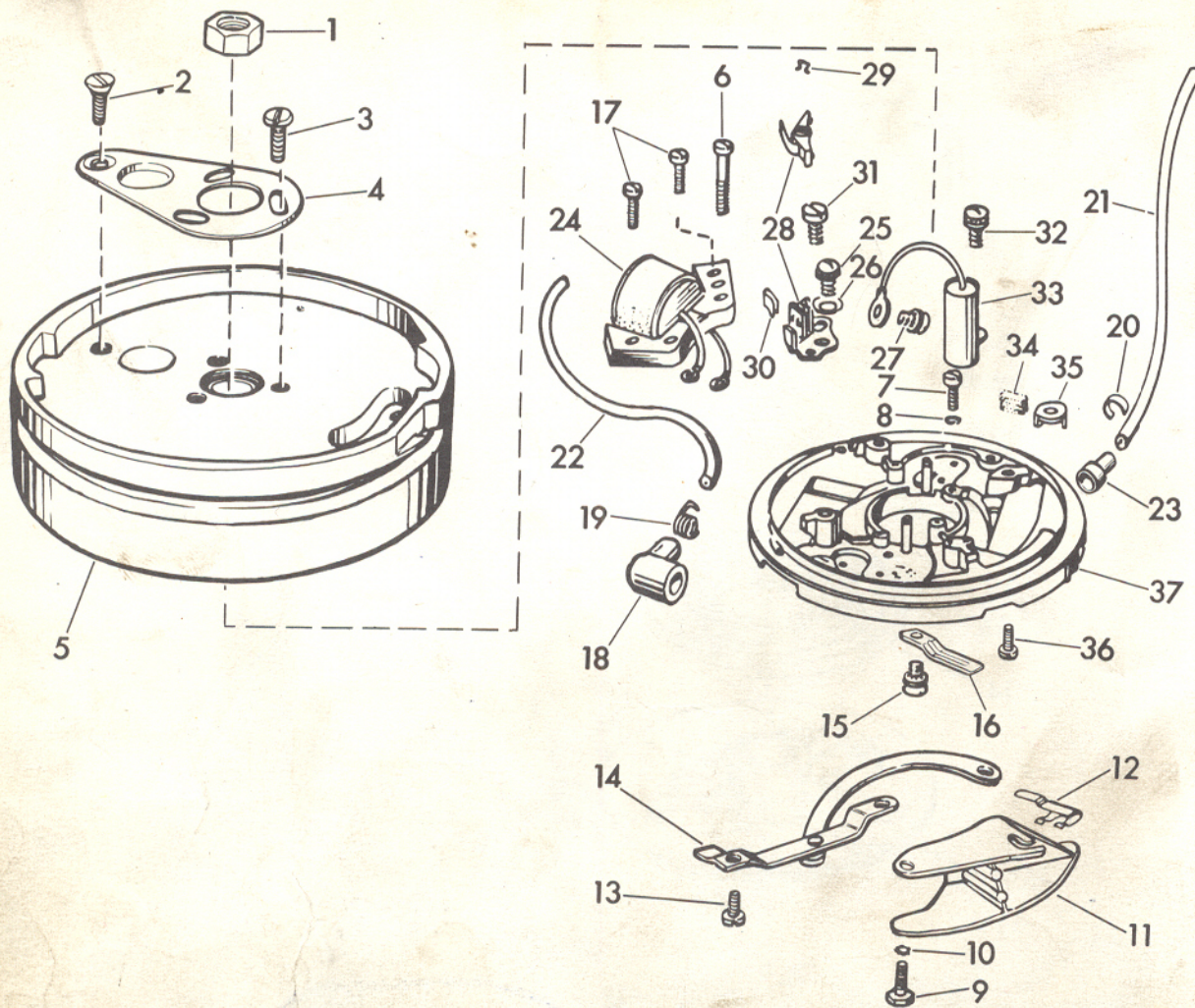


REF. NO.	PART NO.	NAME OF PART	QTY.	REF. NO.	PART NO.	NAME OF PART	QTY.
*	277565	Starter housing assembly	1	8	203699	Starter spindle	1
1	303288	Starter housing to powerhead screw	3	9	203470	Starter pawl retainer ring	1
2	304323	Starter rope to handle anchor	1	10	203698	Starter pawl	1
3	203814	Starter handle, to motors 08000	1	11	203697	Starter friction spring	1
3	203903	Starter handle, motors 08001 and up	1	12	203713	Friction spring to pawl link	2
4	303560	Rope to cover eyelet	1	13	376670	Starter pulley	1
5	13X588	Spindle to starter housing screw	1	14	41B197	Starter spring	1
6	13X51	Starter retaining screw lock-washer	1	15	203819	Starter rope	1
7	202356	Starter spindle washer	1	16	277556	Starter housing	1
				*	304500	Starter housing guide pin, motors 08001 and up	2

*Not Shown

ORDER YOUR PARTS FROM YOUR DISTRICT SERVICE STATION

FLEETWIN MAGNETO

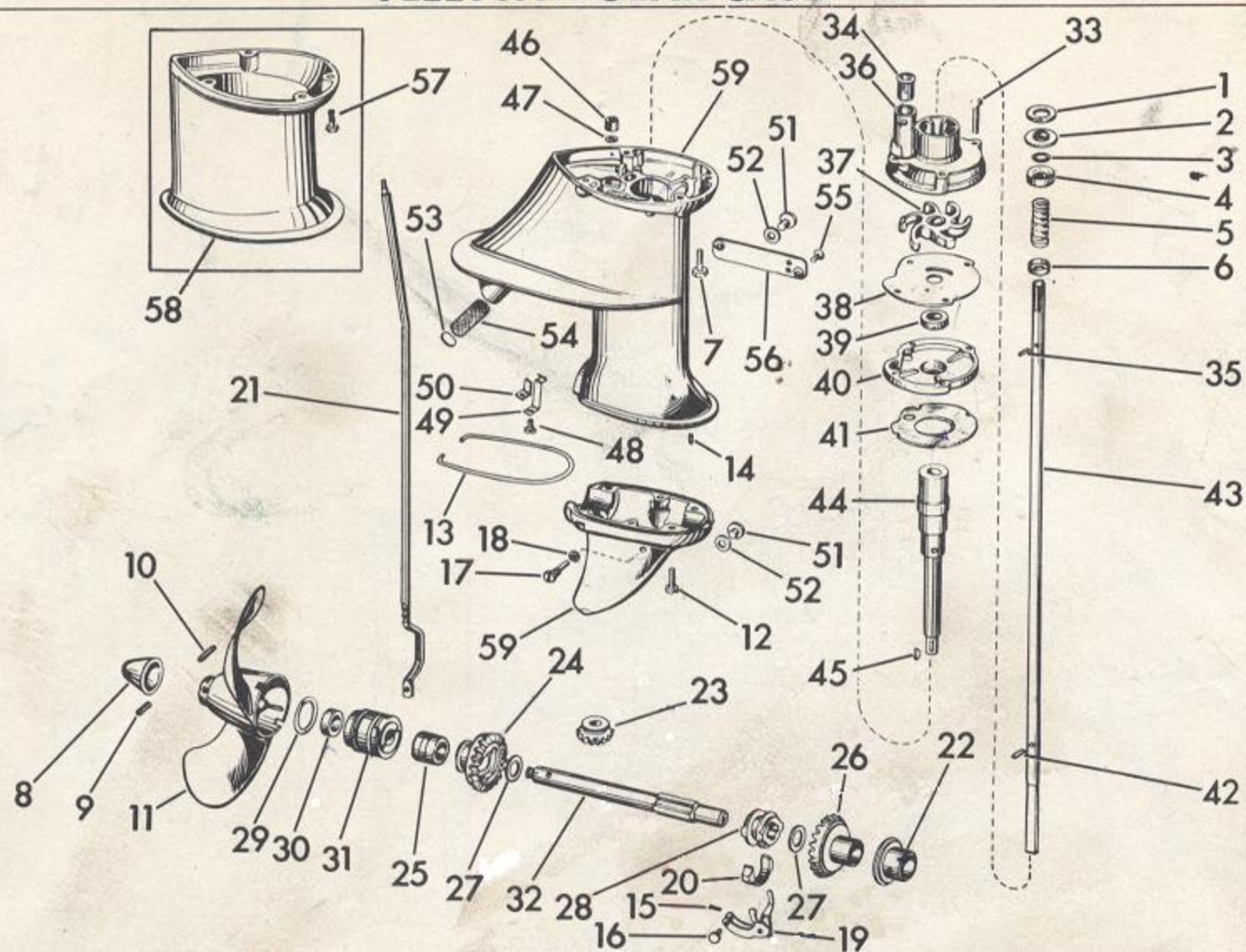


REF. NO.	PART NO.	NAME OF PART	QTY.	REF. NO.	PART NO.	NAME OF PART	QTY.
1	301988	Flywheel nut	1	20	120783	Marker	1
2	510293	Inspection hole cover screw	1	21	510256	High tension lead, upper	1
3	203751	Inspection hole cover screw	3	*	580178	High tension lead assembly, upper	1
4	510292	Inspection hole cover	1	22	510257	High tension lead, lower	1
5	580217	Flywheel and cover assembly	1	*	580179	High tension lead assembly, lower	1
6	510191	Armature plate mounting screw	2	23	510289	Coil to H. T. lead grommet	2
7	510192	Armature plate mounting screw	2	24	580118	Coil assembly	2
8	3X28	Lockwasher	2	25	510278	Breaker mounting screw	2
9	302750	Cam to armature plate screw	2	26	510208	Bow washer	2
10	303952	Throttle cam to armature plate screw washer	1	27	510194	Breaker terminal screw	2
11	203888	Armature plate cam	1	28	580148	Breaker assembly	2
12	303146	Armature plate link spring clip	1	29	71A1052	Spring clip	2
13	510193	Linkage assembly to armature plate screw	2	30	510204	Breaker spring clip	2
14	376064	Throttle control plate and link assembly	1	31	510185	Breaker eccentric screw	2
15	510193	High tension lead clip mounting screw	1	32	510193	Condenser mounting screw	2
16	510259	High tension lead clamp	1	33	510173	Condenser	2
17	510195	Lamination mounting screw	4	34	510189	Oiler wick	1
18	510232	Spark plug rubber cover	2	35	510188	Oiler clip	1
19	510231	Spring terminal	2	36	510278	Hole plug screw	1
				37	580210	Armature plate and post	1
				*	580206	Armature plate assembly	1
				*	43A128	Feeler gauge	1

*Not Shown

ORDER YOUR PARTS FROM YOUR DISTRICT SERVICE STATION

FLEETWIN GEAR CASE

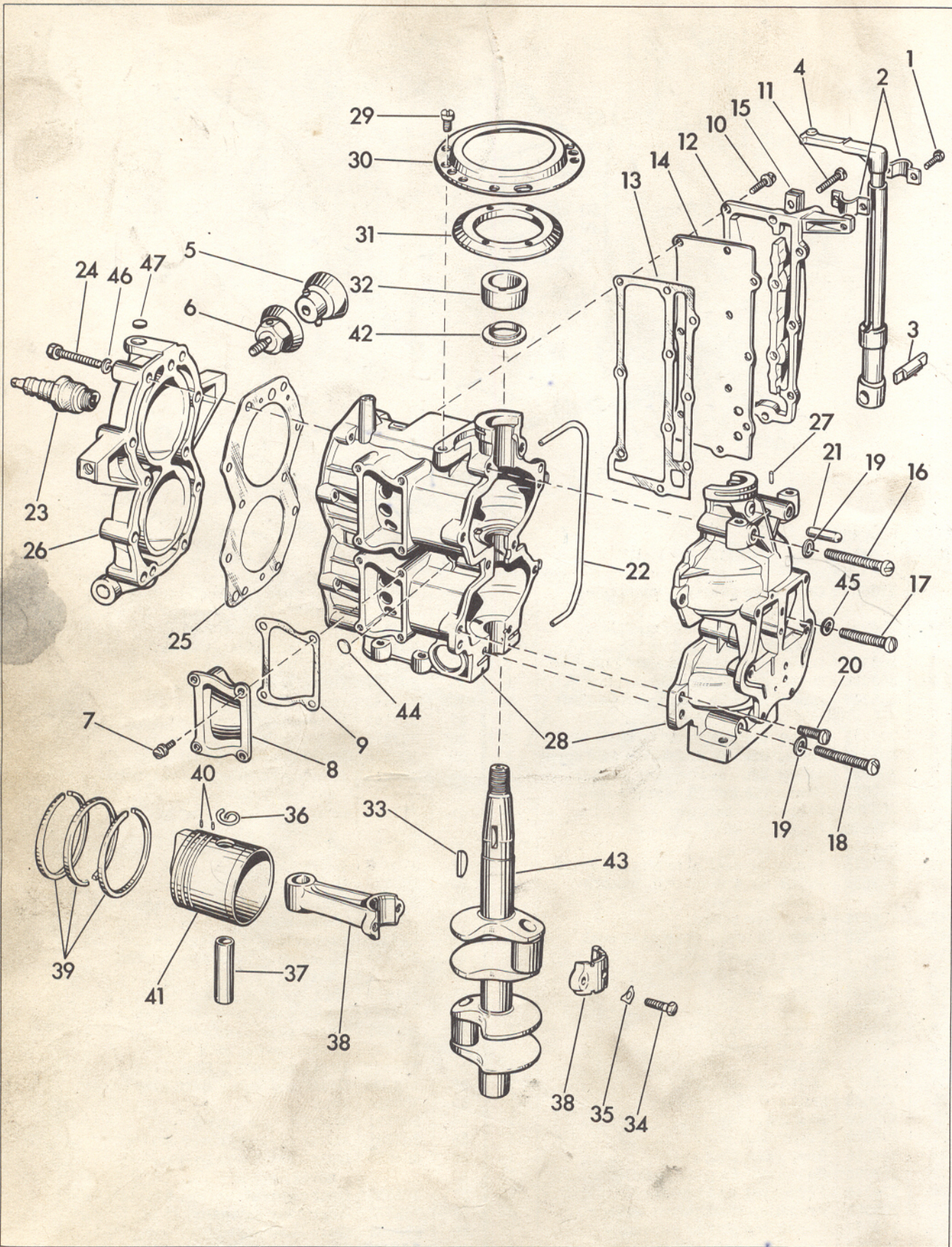


REF. NO.	PART NO.	NAME OF PART	QTY.	REF. NO.	PART NO.	NAME OF PART	QTY.
*	376607	Gear case assembly complete, to motors 08000	1	31	376776	Gear case head and bearing assy., motors 08001 and up	1
*	376791	Gear case assembly complete, motors 08001 and up	1	32	303443	Propeller shaft	1
1	303355	Drive shaft to crankcase gasket	1	33	303395	Impeller housing screw	4
2	303356	Drive shaft to crankcase plate	1	34	302497	Water tube grommet	1
3	303347	Lower bearing seal to drive shaft "O" ring	1	35	303261	Drive shaft drive pin	1
4	303391	Lower bearing to drive shaft seal.	1	36	303442	Impeller housing	1
5	303357	Lower brg. to crankcase seal spring	1	37	277181	Impeller assembly	1
6	303327	Lower brg. seal spring washer	1	38	303376	Impeller housing plate	1
7	302325	Gear case to D/S casing screw	4	39	300599	Bearing housing seal	1
8	303365	Propeller shaft cap	1	40	376074	Bearing housing and bearing assembly	1
9	13X332	Propeller shaft cotter pin	1	41	303339	Gear case to bearing housing gasket	1
10	302333	Drive pin	1	42	300771	Pump impeller pin	1
11	277276	Propeller assy., to motors 08000	1	43	376787	Drive shaft	1
11	277588	Propeller assembly to motors 08001 and up	1	43	376788	Drive shaft, 5 in. longer	1
12	304071	Gear case screw	6	44	376073	Pinion shaft and shock absorber assembly	1
13	303328	Upper to lower gear case seal	1	45	1X135	Pinion to pinion shaft key	1
14	300611	Front bearing dowel	1	46	303332	Upper gear housing shift rod bushing	1
15	15X268	Shift lever pin cotter pin	1	47	301877	Shift rod "O" ring	1
16	302504	Shift rod pin	1	48	43X147	Upper gear case spring screw	1
17	303358	Shifter lever pivot pin	1	49	303466	Upper gear case spring detent	1
18	304083	Pivot pin washer	1	50	303700	Detent spring back up spring	1
19	303340	Shifter lever	1	51	27A283	Drain and water flush plug	2
20	303381	Cradle	1	52	27X284	Drain and water flush plug gasket	2
21	303401	Shift rod	1	53	300314	Plug	1
21	303666	Shift rod, 5 in. longer	1	54	303331	Water intake screen	1
22	303380	Bearing, frqnt	1	55	302681	Water by-pass cover screw	2
23	304009	Drive shaft pinion	1	56	304579	Gear case water by-pass cover, upper	1
24	304010	Rear reversing gear	1	57	302325	Gear case ext. screw, 5 in. longer	4
25	303998	Rear reverse gear bushing	1	58	303672	Gear case extension, 5 in. longer	1
26	376345	Front gear and bushing	1	59	376606	Gear case assembly, upper and lower, to motors 08000	1
27	303361	Propeller shaft thrust washer	2	59	376775	Gear case assy., upper and lower motors 08001 and up	1
28	376078	Clutch dog shifter assembly	1				
29	303360	Gear case head "O" ring	1				
30	303345	Gear case head seal	1				
31	376069	Gear case head and bearing assy., to motors 08000	1				

*Not Shown

ORDER YOUR PARTS FROM YOUR DISTRICT SERVICE STATION.

FLEETWIN POWER HEAD



ORDER YOUR PARTS FROM YOUR DISTRICT SERVICE STATION

FLEETWIN POWER HEAD

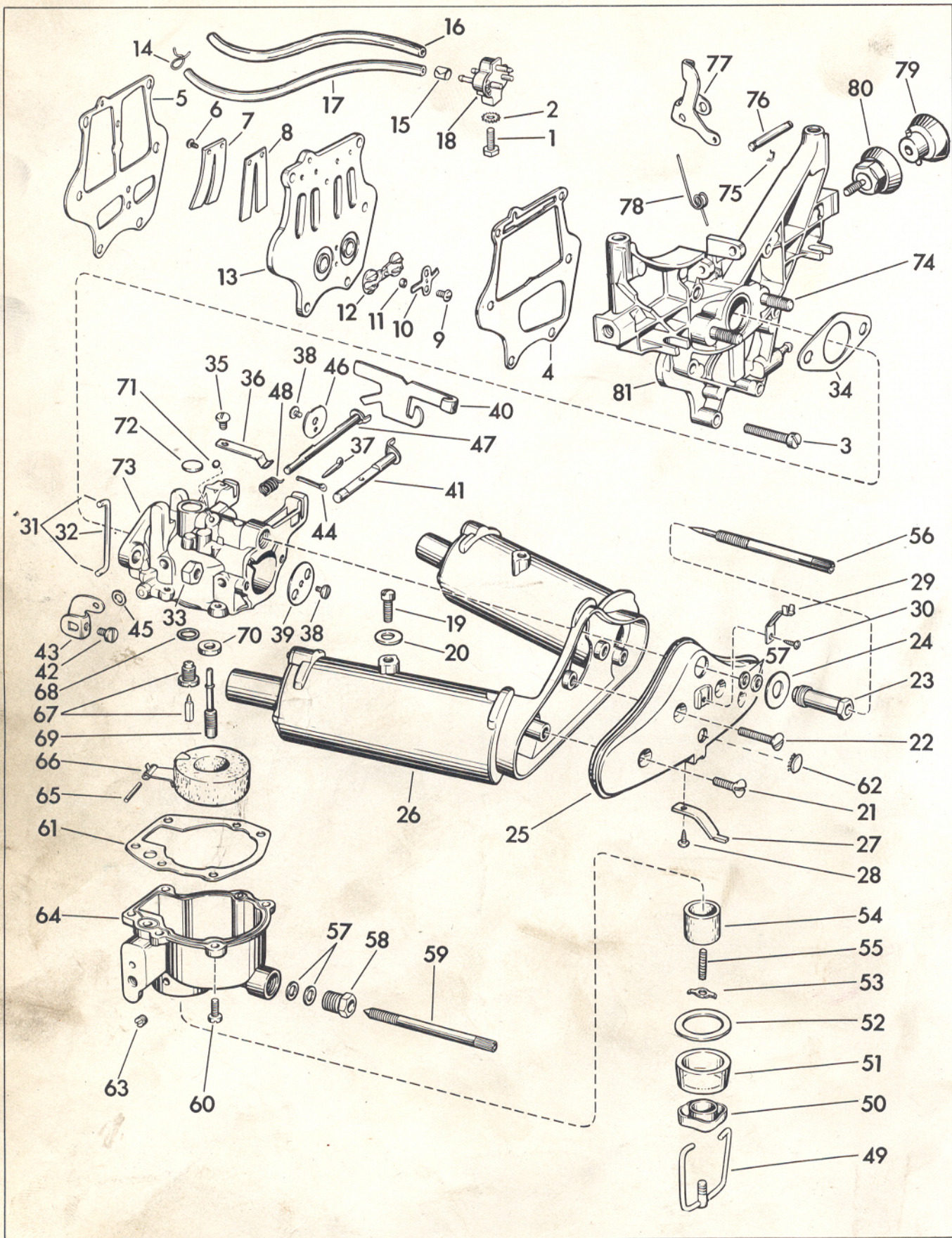
REF. NO.	PART NO.	NAME OF PART	QTY.	REF. NO.	PART NO.	NAME OF PART	QTY.
1	510193	Bearing clamp screw	2	24	303459	Cylinder head cap screw	10
2	303109	Control lever bracket clamp . . .	2	25	203034	Cylinder head gasket	1
3	304155	Armature plate control lever pin .	1	26	277375	Cylinder head and plug	1
4	203710	Armature plate control lever . . .	1	27	202094	Oil drain line plug	2
5	203654	Cover mount	2	28	277446	Cylinder and crankcase assembly	1
6	277368	Cover mount retainer	2	29	304442	Armature plate support screw . .	4
*	277369	Cover mount and retainer assembly	1	30	303278	Armature plate support	1
7	43X259	By-pass cover plate screw	8	31	303277	Armature plate retaining ring . .	1
8	202527	By-pass cover	2	32	510168	Magneto cam	1
9	202528	By-pass cover gasket	2	33	120395	Flywheel key	1
10	13X558	Exhaust cover plate screw	9	34	43A44	Connecting rod screw	4
11	132346	Exhaust cover to cylinder screw, long	1	35	41A17	Connecting rod screw lock plate .	4
12	202374	Exhaust cover plate	1	36	120325	Piston pin spring ring	4
13	202580	Exhaust cover plate gasket	1	37	202522	Piston pin	2
14	203020	Exhaust cover plate water baffle .	1	37	202523	Piston pin .005 O.S.	2
15	304693	High tension leads clamp	1	38	277401	Connecting rod	2
16	302431	Cylinder to crankcase screw, upper	2	39	202524	Piston ring	6
17	203681	Cylinder to crankcase screw, center	2	39	203232	Piston ring .020 O.S.	6
18	71X1084	Cylinder to crankcase screw, lower	2	40	300288	Piston dowel pin	6
19	300399	Cylinder to crankcase washer, upper and lower	4	41	276790	Piston less rings	2
20	21X167	Cylinder to crankcase screw	4	41	277200	Piston less rings .020 O.S. . . .	2
21	300402	Cylinder to crankcase taper pin . .	2	42	41A362	Oil slinger	1
22	203433	Oil transfer tube (upper bearing) .	1	43	203375	Crankshaft	1
†23	200322	Spark plug, Champion J-6J	2	44	7X178	Oil reservoir welch plug	1
†23	376290	Spark plug, Auto-Lite A3X	2	45	552499	Cylinder to crankcase center screw washer	2
				46	43X302	Cylinder head screw washer . . .	10
				47	27X309	Cylinder head welch plug	3
				*	277596	Set of gaskets	1

*Not Shown

†We recommend either Champion or Auto-Lite spark plugs.

ORDER YOUR PARTS FROM YOUR DISTRICT SERVICE STATION

FLEETWIN CARBURETOR



ORDER YOUR PARTS FROM YOUR DISTRICT SERVICE STATION

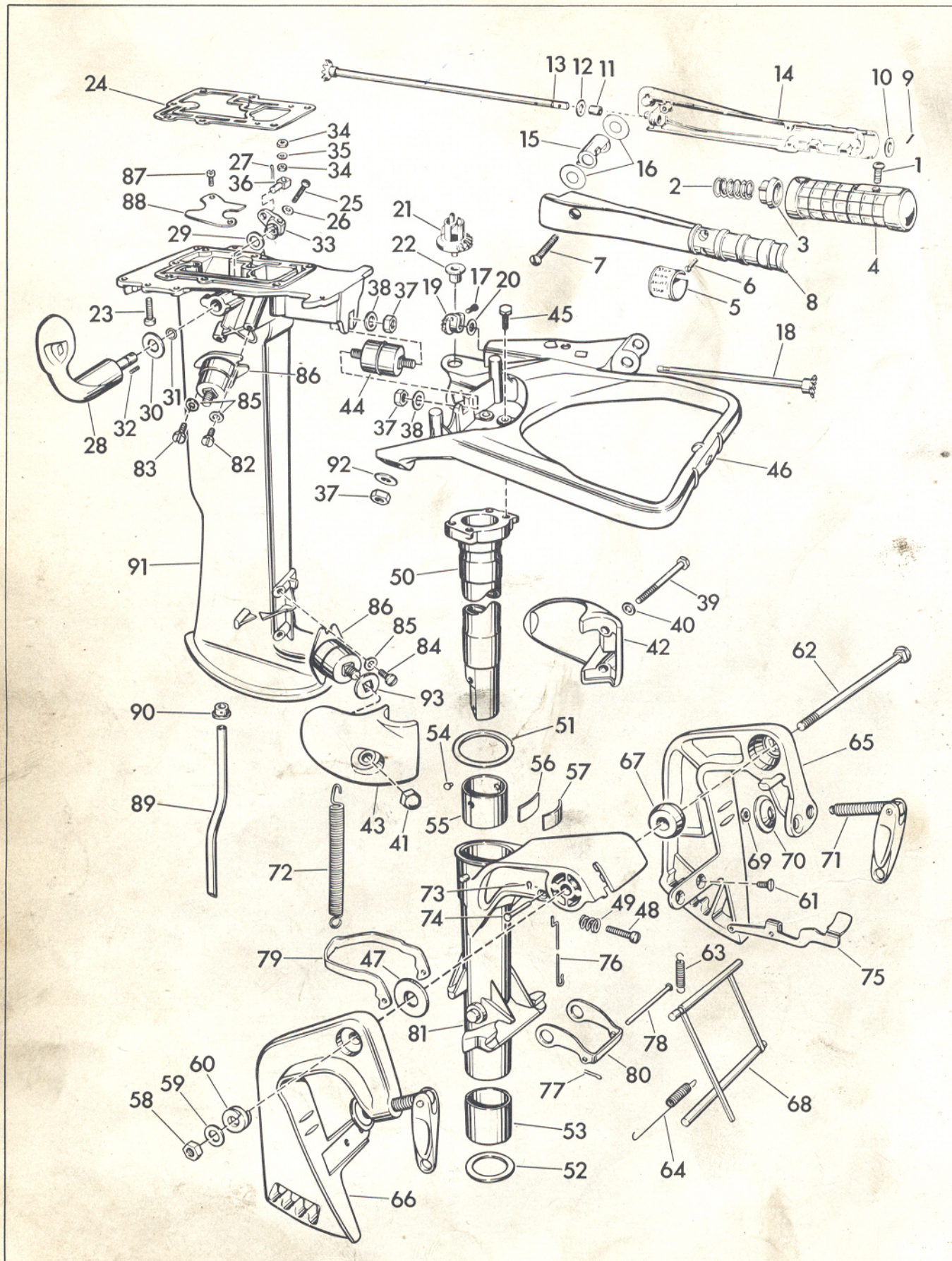
FLEETWIN CARBURETOR

REF. NO.	PART NO.	NAME OF PART	QTY.	REF. NO.	PART NO.	NAME OF PART	QTY.
*	376685	Carburetor assembly	1	42	304572	Throttle lever screw	1
1	21X359	Fuel connector body screw	1	43	376725	Lever and screw assembly	1
2	51X137	Fuel connector-steering bracket lockwasher	1	44	303049	Throttle shaft cotter pin	1
3	133451	Manifold to crankcase screw	6	45	303048	Throttle shaft washer	1
4	203379	Manifold to leaf plate gasket	1	46	303477	Throttle valve	1
5	203378	Leaf plate to crankcase gasket	1	47	375922	Throttle shaft and lever assembly	1
6	303761	Leaf screw	4	48	302996	Throttle shaft spring	1
7	202668	Leaf back-up plate	2	49	375992	Yoke and screw assembly	1
8	202667	Leaf	2	50	375989	Thumb nut and swivel cup assembly	1
*	277275	Carburetor leaf plate assembly	1	51	303121	Filter bowl	1
9	19X191	Check valve to leaf plate screw	2	52	303122	Filter bowl gasket	1
10	302048	Check valve spring	1	53	304539	Filter nut	1
11	302046	Check valve spacer	2	54	303133	Filter element	1
12	302042	Air line check valve	1	55	304518	Filter stud	1
13	203377	Leaf plate only	1	56	303448	Slow speed needle valve	1
14	302647	Carburetor and manifold hose clamp	2	57	43X123	High and slow speed valve packing	4
15	301822	Fuel connector hose clamp	2	58	300179	High speed needle valve nut	1
16	203286	Fuel connector to manifold hose	1	59	303476	High speed needle valve	1
17	303171	Fuel connector to carburetor hose	1	60	71X1589	Float chamber to carburetor body screw	5
18	375788	Fuel connector body	1	61	302994	Carburetor body to float chamber gasket	1
19	25X74	Silencer to manifold screw	2	62	203652	Silencer button plug	1
20	21X200	Silencer to manifold screw washer	2	63	303041	Float chamber drain screw	1
21	302124	Cover plate to silencer body screw	2	64	376681	Float chamber and nipple assembly	1
22	200931	Silencer to carburetor screw	2	65	300096	Float arm hinge pin	1
23	303479	Slow speed needle valve nut	1	66	375919	Float and arm	1
24	203355	Slow speed carburetor packing nut washer	1	67	375985	Float valve and seat	1
25	203387	Air silencer cover plate	1	68	301996	Float valve seat washer	1
26	277286	Air silencer body and loading tube	1	69	303478	High speed nozzle	1
27	203479	High speed needle stop	1	70	302984	Float chamber to carburetor boss gasket	1
28	303780	High speed needle stop screw	1	71	304201	Carburetor lead shot	5
29	203465	Slow speed needle stop	1	72	27X309	Expansion plug	1
30	61X109	Slow speed needle stop screw	1	73	376248	Carburetor body only	1
31	41A110	Cam follower link pin	2	74	85A101	Manifold to carburetor stud	2
32	203383	Throttle lever to cam follower link	1	75	71A1052	Cam follower clip	2
33	19X136	Carburetor to manifold nut	2	76	203384	Cam follower pin	1
34	303437	Carburetor to manifold gasket	1	77	203381	Cam follower	1
35	302430	Carburetor body to spring screw	1	78	203382	Cam follower spring	1
36	302977	Choke control rod spring	1	*	277369	Cover mount and retainer assembly	1
37	21X163	Choke control rod cotter pin	1	79	203654	Cover mount	2
38	303760	Throttle and choke valve to shaft screw	2	80	277368	Cover mount retainer	2
39	303709	Choke valve	1	81	277444	Intake manifold and nipple assembly	1
40	302997	Choke control rod	1				
41	375921	Choke shaft and lever assembly	1				

*Not Shown

ORDER YOUR PARTS FROM YOUR DISTRICT SERVICE STATION

FLEETWIN EXHAUST TUBE AND SWIVEL BRACKET



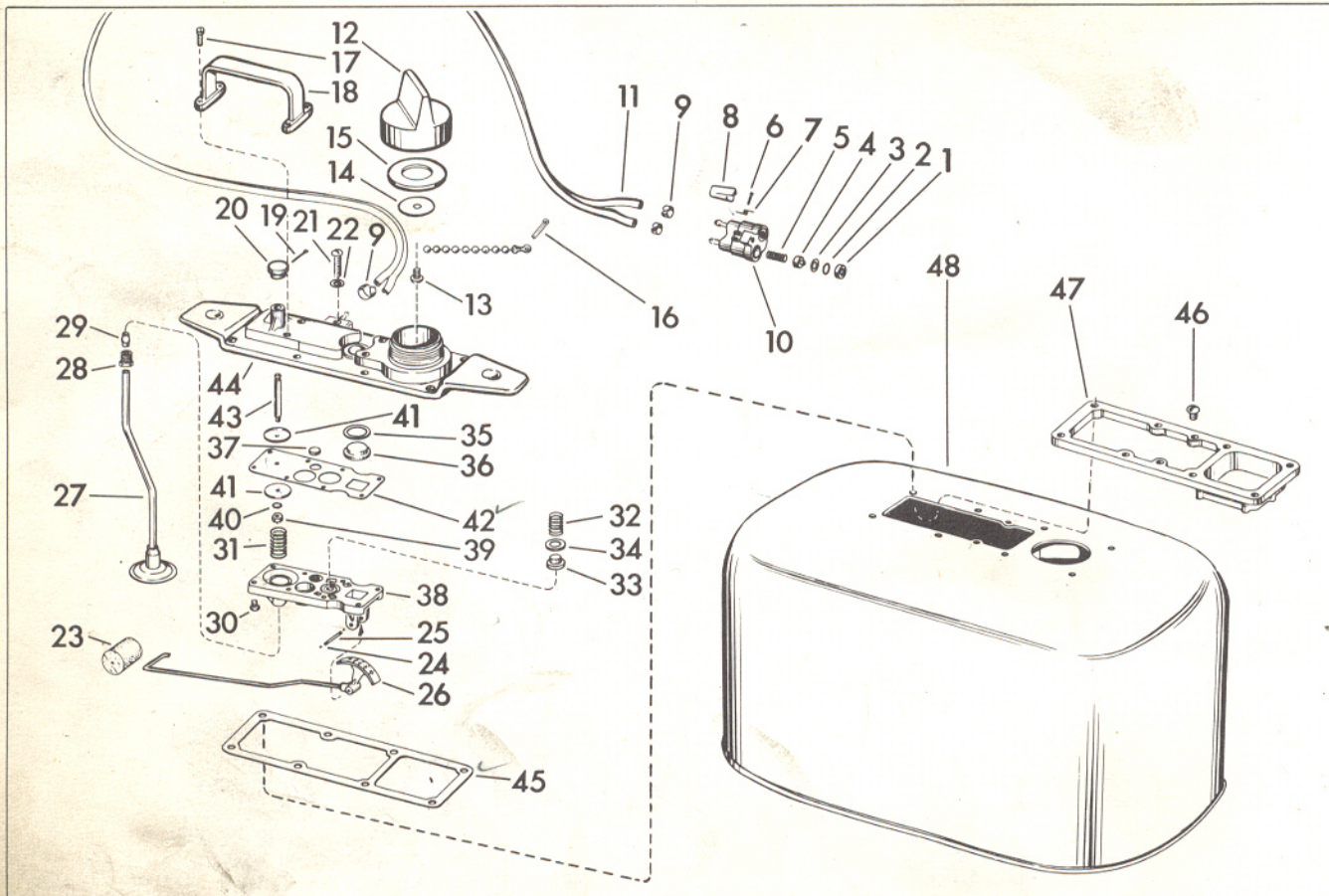
ORDER YOUR PARTS FROM YOUR DISTRICT SERVICE STATION

FLEETWIN EXHAUST TUBE AND SWIVEL BRACKET

REF. NO.	PART NO.	NAME OF PART	QTY.	REF. NO.	PART NO.	NAME OF PART	QTY.
1	302710	Steering handle grip screw	1	46	376495	Steering bracket assembly and bushing	1
2	301656	Grip to friction block spring . . .	1				
3	303282	Grip friction block	1	47	304278	Stern bracket to swivel bracket washer	1
4	203882	Steering handle grip	1				
5	303110	Steering handle throttle control plate	1	48	132679	Co-pilot plate screw	1
				49	551113	Co-pilot plate screw spring . . .	1
6	133452	Steering handle halves screw . . .	2	50	304293	Steering bracket pilot shaft . . .	1
7	303078	Steering handle halves screw . . .	1	51	304290	Steering bracket to swivel bracket thrust washer	1
8	303093	Steering handle - inner half . . .	1				
9	300346	Gear and shaft assy groove pin . .	1	52	304289	Swivel bracket to lower mount housing thrust washer	1
10	303252	Steering handle to spring washer .	1				
11	302717	Steering handle bushing	1	53	303371	Swivel bracket shock absorber - lower	1
12	302712	Steering handle washer	1				
13	376416	Throttle control gear and shaft assy - long, to motors 08000 . .	1	54	303696	Swivel bracket to upper liner pin	1
13	376691	Throttle control gear and shaft assy. - long, motors 08001 and up	1	55	303370	Upper liner	1
				56	303697	Co-pilot plate to upper liner spacer	1
14	303094	Steering handle - outer half . . .	1	57	303363	Co-pilot plate	1
15	303096	Steering handle gears cover . . .	1	58	17X182	Tilting bolt nut	1
16	303079	Steering bracket to handle washer	2	59	25X196	Spring to tilting bolt nut washer .	1
17	71X1352	Pinion screw	1	60	302051	Tilting bolt spring	1
18	376415	Gear and shaft assembly - short, to motors 08000	1	61	303396	Stern bracket screw - Port to Starboard	2
18	376689	Gear and shaft assy. - short, motors 08001 and up	1	62	304277	Tilting bolt	1
				63	202021	Tilting lever spring	1
19	303142	Throttle control pinion	1	64	304283	Tilting lever stabilizer spring . .	1
20	303107	Throttle control pinion gear washer	1	65	376494	Stern bracket assy - Port	1
				66	376493	Stern bracket assy - Starboard . .	1
21	304298	Throttle control gear	1	67	301983	Conical washer	1
22	303140	Throttle control bushing	1	68	376505	Tilting lever assy	1
23	21X167	Flange to cylinder screw	7	69	302420	Swivel plate retainer	2
24	304314	D/S casing to cylinder gasket . .	1	70	41A48	Clamp screw swivel plate	2
25	303714	Shift lever to shaft screw	1	71	375744	Clamp screw, plate and retainer .	2
26	303715	Shift lever to shaft washer	1	72	304282	Reverse lock spring	1
27	15X268	Upper shift rod cotter pin	1	73	303049	Pivot shaft cotter pin	1
28	376490	Shift lever and shaft assembly . .	1	74	303930	Reverse lock lever pivot shaft . .	1
29	303775	Shift lever and shaft washer - inner	1	75	304279	Reverse lock arm	1
				76	303978	Reverse lock arm to shaft link . .	1
30	303864	Shift lever and shaft assy washer - outer	1	77	15X268	Reverse lock rod cotter pin . . .	1
				78	303949	Reverse lock rod	1
31	303191	Shift lever "O" ring	1	79	303948	Reverse lock locking lever	1
32	303236	Shift lever and shaft assembly to washer spring	1	80	303950	Reverse lock link	1
				81	304291	Swivel bracket	1
33	376922	Shift rod lever and bushing assy. .	1	82	302416	Upper mount screw - front	2
34	85X64	Shift rod to connector nut	2	83	302416	Upper mount screw - rear	2
35	303701	Shift rod nut lockwasher	1	84	39X176	Lower mount screw	4
36	303702	Shift rod to lever connector	1	85	303887	Shock absorber screw washer - small	8
37	303889	Upper mount nut	4				
38	303884	Shock absorber screw washer - large	2	86	303879	Upper and lower side mounts . . .	4
				87	303393	Exhaust relief plate to exhaust housing screw	2
39	304299	Lower mount housing to pilot shaft screw	2	88	304304	Exhaust housing cover plate	1
40	39X17	Lower mount housing screw lockwasher	2	89	304317	Water tube	1
				89	304318	Water tube, 5 in. longer	1
41	303890	Rubber mount to lower housing nut	2	90	302497	Water tube grommet	1
42	304286	Lower mount housing - Port	1	91	376779	Exhaust housing assembly	1
43	304285	Lower mount housing - Starboard	1	92	304376	Upper side mounts washer	2
44	303880	Upper center mount	1	93	304168	Rubber mount to lower housing gasket	2
45	304027	Steering brkt to pilot shaft screw	4				

ORDER YOUR PARTS FROM YOUR DISTRICT SERVICE STATION

CRUIS-A-DAY JR. FUEL TANK



REF. NO.	PART NO.	NAME OF PART	QTY.	REF. NO.	PART NO.	NAME OF PART	QTY.
*	277495	Fuel tank assembly	1	24	302654	Indicator pin snap ring	2
1	301828	Fuel connector seal ring retainer	2	25	302653	Indicator lower housing pin	1
2	301824	Fuel connector seal "O" ring	2	26	376192	Indicator assembly	1
3	301827	Fuel connector valve guide washer	2	27	376587	Fuel tank foot valve assembly	1
4	301826	Fuel connector valve	2	28	132691	Fuel line nut	1
5	301825	Fuel connector valve spring	2	29	13X304	Fuel line gland	1
6	301832	Fuel connector lock rivet	1	30	13X558	Lower to upper housing screw	8
7	301829	Fuel connector lock spring	1	31	301803	Fuel pump spring	1
8	301830	Fuel connector lock	1	32	302135	Pressure relief valve spring	1
9	301822	Hose clamp	4	33	302136	Pressure relief valve	1
10	375587	Fuel connector housing assembly	1	34	302137	Pressure relief valve washer	1
11	303414	Hose	1	35	302571	Fuel tank glass seal	1
12	375817	Filler cap assembly	1	36	302568	Fuel tank glass	1
13	301837	Filler cap plate screw	1	37	301802	Fuel pump disc valve	1
14	302560	Filler cap plate	1	38	302555	Fuel tank lower housing	1
15	301835	Filler cap gasket	1	39	21X195	Push rod nut	1
16	15X213	Filler cap chain cotter pin	1	40	301736	Push rod lock washer	1
17	13X558	Handle to housing screw	4	41	301800	Fuel pump diaphragm support	2
18	302570	Fuel tank handle	1	42	302563	Fuel pump diaphragm	1
19	17X186	Push button cotter pin	1	43	302561	Fuel pump push rod	1
20	301815	Fuel pump push button	1	44	376276	Fuel tank housing - upper	1
21	304137	Support plate to housing screw	8	45	302557	Fuel tank gasket	1
22	301814	Support plate to housing screw gasket	8	46	53X85	Support plate to tank screw	2
23	302559	Fuel tank float	1	47	302556	Fuel tank support plate	1
				48	277496	Fuel tank only	1

*Not Shown

ORDER YOUR PARTS FROM YOUR DISTRICT SERVICE STATION.

EVINRUDE MOTORS • MILWAUKEE 16, WISCONSIN

IN CANADA: EVINRUDE MOTORS, PETERBOROUGH, ONTARIO